

TECHNICAL SPECIFICATIONS

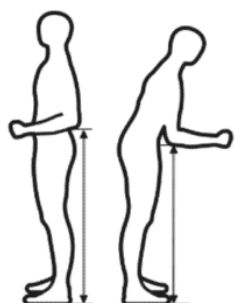
smartCRUTCH™

The freedom to move



SPECIFICATIONS	SMALL	MEDIUM	LARGE
Weight of Single SmartCRUTCH	1001g	1004g	1007g
Forearm Length Range	19 - 23 cm	22 - 25cm	24 - 32cm
Circumference Range of Cuff	21 - 28cm	27 - 32cm	27 - 32cm
Height Ranges for user with length of lower leg used at that range	158 - 182cm	158 - 182cm	158 - 182cm
Elbow Height Range at the 20° - 60° Angle Setting	76 - 118cm	86 - 120cm	96 - 126cm
Elbow Height Range at the 60° - 90° Angle Setting	72 - 115cm	82 - 116cm	92 - 122cm
User Weight Limit - NON-Weight Bearing Use	140kgs	140kgs	140kgs
User Weight Limit - Weight Bearing Use (for Stability & Balance)	120kgs	120kgs	120kgs

MEASUREMENT OF HEIGHT FROM FLOOR TO ELBOW



- To measure your elbow height, stand next to a wall, in your preferred shoes
- Hold your arms and posture in the position that YOU would naturally use the crutch
- Make a mark on the wall at your elbow
- Measure from the mark to the floor

ARM MEASUREMENT LENGTH



PRACTICAL FEATURES

Designed for Mobility and Comfort

Fully adaptable and modular design

The adjustment length and angle allow for user customisation

